

# Auburn University Natural Resources Management & Development Institute

April 2011



AUBURN  
UNIVERSITY

Larry Fillmer  
Executive Director



# Biomass Feedstock Production Research

Forest  
Biomass

Dedicated  
Energy Crops

Agricultural  
Wastes  
and Residues

Oil Crops

- Production
- Harvest
- Processing
- Storage
- Transport



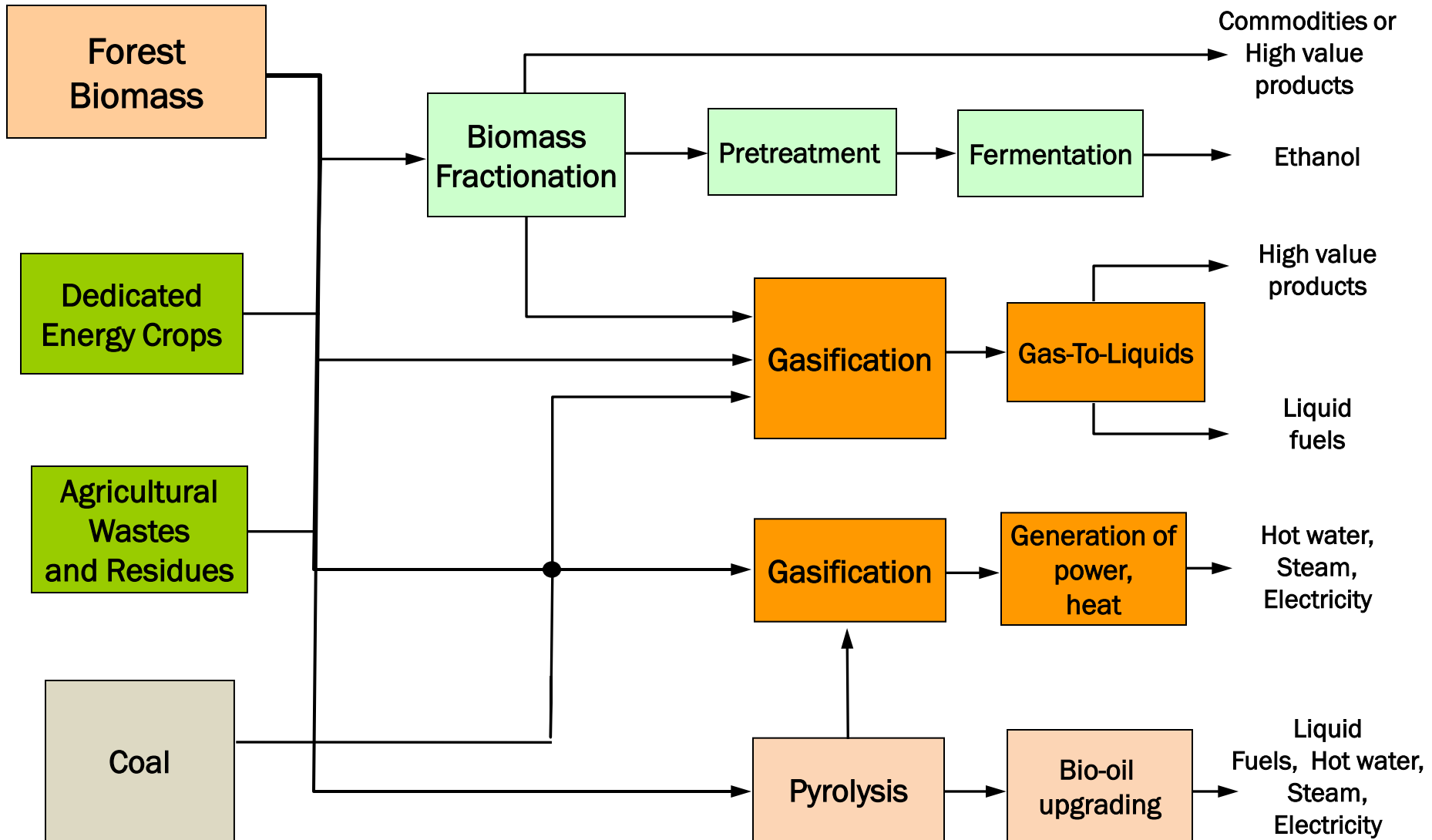
# HIGH TONNAGE FOREST BIOMASS SYSTEM

## Consortium to demonstrate new logistics concepts for pine plantations

- × U.S. Department of Energy
- × Auburn University
- × USDA Forest Service
- × Corley Land Services
- × Tigercat
- × Billy Barnes Enterprises
- × Biorefinery collaborators
  - × Coskata
  - × Genera Energy



# Bioenergy Conversion Research



# SUMMARY

× Auburn’s bioenergy programs have broad scope:

+ Farm/forest to fuel pump to fleet

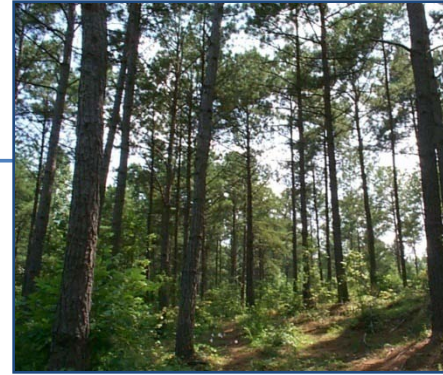
× Auburn’s signature efforts:

+ Feedstock supply chain

+ Biomass fractionation

+ Biomass gasification and gas-to-liquids

+ “Energy Partners” program



# IBBS VIDEO

---

- × Our Center for Bioenergy and Bioproducts, has formed a partnership with the University of Tennessee and other collaborators on a major biofuels research collaboration
- × To help make the case for this collaboration, a video was developed that summarizes what differentiates Auburn and its partners in this collaboration.
- × The video articulates the challenges facing the biofuels industry, as well as our proposed solutions.